

常州卡迪国际贸易有限公司

CHANGZHOU KADI INTERNATIONAL TRADE CO.,LTD



www.kadi-global.com
E: info@kadi-cn.com
sales@kadi-cn.com

About us

Changzhou Kadi International Trade Co.,Ltd is a professional supplier that is concerned with top quality Steel, Stainless Steel, Aluminum, Zinc Alloy Casting parts and Powder Metallurgy parts.

Based on more than 10 years experience cooperated with reliable suppliers, kadi established on July, 2010. All of our products comply with international quality standards and are greatly appreciated in a variety of different markets throughout the world.

As a result of our high quality products and outstanding customer service, we have gained a global sales network reaching Australia, England, Holland and South Africa.

If you would like to discuss a custom order, please feel free to contact us. We are looking forward to forming successful business relationships with new clients around the world in the near future.



Purpose

Our company inherits the enterprise tenet of "integrity-based , customer first, Top quality , whole staff participating, ceaseless improvement and pursuing excellence".

Service

Our well-equipped facilities and excellent quality control throughout all stages of production enables us to guarantee total customer satisfaction.



Contents

Steel casting

Pump valve.....	1-24
Lifting equipment.....	25-31
Metallurgical equipment accessories.....	32-38
Forestry machinery.....	39-44
Stain steel casting parts.....	45



Pump valve/Impeller1



Product Details

Model No:	Impeller / Customized
Material:	Carbon steel/alloy steel/stainless steel
Type :	Chemical Hardening Sand
Casting Method:	Thermal Gravity Casting
Sand Core Type:	Resin Sand Core
Application:	Oil and Gas
Machining :	CNC machining

ASTM A216	WCB,WCC...
ASTM A352	LCA,LCB,LCC,LC1,LC2,LC3,CA6NM...
ASTM A217	WC1,WC5,WC6,WC9,C5,C12,C12A,CA15...
ASTM A351	CF3,CF8,CF3M,CF8M,CF8C,CF10,CK20,CF10MC,CN7M,CN3MN,CG6MN,CG8M,CK3MCuN,CG3M...
ASTM A487	4A,4B,4C...
ASTM A494	M35-1,M35-2,N12MV,CW12MW,CW6MC..
ASTM A747	CB7Cu-1,Cu7Cu-2...
ASTM A890	CD4MCu,CD3MCuN...
ASTM A995	CD4MCuN,CE8MN,CD6MN,CD3MN,CE3MN,CD3MWCuN...
NICKEL	NICKEL 200, NICKEL 201...
NICKEL-COPPER	MONEL 400, MONEL 405, MONEL 500...
NICKEL-CHROME-ALLOY	INCONEL 600, INCONEL 601, INCONEL 625, INCONEL 718...
EN 10213	1.0619,1.4308,1.4408,1.4309,1.4409,1.7357,1.7379...

Note: All mentioned names, Trademarks and Part No. are the property of their respective manufacturers, all consumables are not original, are manufactured and sold by KADI CO., reference to the original manufacturer is for convenience only.



Product Details

Model No:	Impeller 2 / Customized
Material:	Carbon steel/alloy steel/stainless steel
Type :	Chemical Hardening Sand
Casting Method:	Thermal Gravity Casting
Sand Core Type:	Resin Sand Core
Application:	Oil and Gas
Machining :	CNC machining

ASTM A216	WCB,WCC...
ASTM A352	LCA,LCB,LCC,LC1,LC2,LC3,CA6NM...
ASTM A217	WC1,WC5,WC6,WC9,C5,C12,C12A,CA15...
ASTM A351	CF3,CF8,CF3M,CF8M,CF8C,CF10,CK20,CF10MC,CN7M,CN3MN,CG6MN,CG8M,CK3MCuN,CG3M...
ASTM A487	4A,4B,4C...
ASTM A494	M35-1,M35-2,N12MV,CW12MW,CW6MC..
ASTM A747	CB7Cu-1,Cu7Cu-2...
ASTM A890	CD4MCu,CD3MCuN...
ASTM A995	CD4MCuN,CE8MN,CD6MN,CD3MN,CE3MN,CD3MWCuN...
NICKEL	NICKEL 200, NICKEL 201...
NICKEL-COPPER	MONEL 400, MONEL 405, MONEL 500...
NICKEL-CHROME-ALLOY	INCONEL 600, INCONEL 601, INCONEL 625, INCONEL 718...
EN 10213	1.0619,1.4308,1.4408,1.4309,1.4409,1.7357,1.7379...

CHANGZHOU KADI INTERNATIONAL

Note: All mentioned names, Trademarks and Part No. are the property of their respective manufacturers, all consumables are not original, are manufactured and sold by KADI CO., reference to the original manufacturer is for convenience only.

Pump valve/Pump cover1



Product Details

Model No:	Pump cover 1 / Customized
Material:	Carbon steel/alloy steel/stainless steel
Type :	Chemical Hardening Sand
Casting Method:	Thermal Gravity Casting
Sand Core Type:	Resin Sand Core
Application:	Oil and Gas
Machining :	CNC machining

ASTM A216	WCB,WCC...
ASTM A352	LCA,LCB,LCC,LC1,LC2,LC3,CA6NM...
ASTM A217	WC1,WC5,WC6,WC9,C5,C12,C12A,CA15...
ASTM A351	CF3,CF8,CF3M,CF8M,CF8C,CF10,CK20,CF10MC,CN7M,CN3MN,CG6MN,CG8M,CK3MCuN,CG3M...
ASTM A487	4A,4B,4C...
ASTM A494	M35-1,M35-2,N12MV,CW12MW,CW6MC..
ASTM A747	CB7Cu-1,Cu7Cu-2...
ASTM A890	CD4MCu,CD3MCuN...
ASTM A995	CD4MCuN,CE8MN,CD6MN,CD3MN,CE3MN,CD3MWCuN...
NICKEL	NICKEL 200, NICKEL 201...
NICKEL-COPPER	MONEL 400, MONEL 405, MONEL 500...
NICKEL-CHROME-ALLOY	INCONEL 600, INCONEL 601, INCONEL 625, INCONEL 718...
EN 10213	1.0619,1.4308,1.4408,1.4309,1.4409,1.7357,1.7379...

CHANGZHOU KADI INTERNATIONAL

Note: All mentioned names, Trademarks and Part No. are the property of their respective manufacturers, all consumables are not original, are manufactured and sold by KADI CO., reference to the original manufacturer is for convenience only.

Pump valve/Pump cover2



Product Details

Model No:	Pump cover 2 / Customized
Material:	Carbon steel/alloy steel/stainless steel
Type :	Chemical Hardening Sand
Casting Method:	Thermal Gravity Casting
Sand Core Type:	Resin Sand Core
Application:	Oil and Gas
Machining :	CNC machining

ASTM A216	WCB,WCC...
ASTM A352	LCA,LCB,LCC,LC1,LC2,LC3,CA6NM...
ASTM A217	WC1,WC5,WC6,WC9,C5,C12,C12A,CA15...
ASTM A351	CF3,CF8,CF3M,CF8M,CF8C,CF10,CK20,CF10MC,CN7M,CN3MN,CG6MN,CG8M,CK3MCuN,CG3M...
ASTM A487	4A,4B,4C...
ASTM A494	M35-1,M35-2,N12MV,CW12MW,CW6MC..
ASTM A747	CB7Cu-1,Cu7Cu-2...
ASTM A890	CD4MCu,CD3MCuN...
ASTM A995	CD4MCuN,CE8MN,CD6MN,CD3MN,CE3MN,CD3MWCuN...
NICKEL	NICKEL 200, NICKEL 201...
NICKEL-COPPER	MONEL 400, MONEL 405, MONEL 500...
NICKEL-CHROME-ALLOY	INCONEL 600, INCONEL 601, INCONEL 625, INCONEL 718...
EN 10213	1.0619,1.4308,1.4408,1.4309,1.4409,1.7357,1.7379...

CHANGZHOU KADI INTERNATIONAL

Note: All mentioned names, Trademarks and Part No. are the property of their respective manufacturers, all consumables are not original, are manufactured and sold by KADI CO., reference to the original manufacturer is for convenience only.

Pump valve/Pump cover3



Product Details

Model No:	Pump cover 3 / Customized
Material:	Carbon steel/alloy steel/stainless steel
Type :	Chemical Hardening Sand
Casting Method:	Thermal Gravity Casting
Sand Core Type:	Resin Sand Core
Application:	Oil and Gas
Machining :	CNC machining

ASTM A216	WCB,WCC...
ASTM A352	LCA,LCB,LCC,LC1,LC2,LC3,CA6NM...
ASTM A217	WC1,WC5,WC6,WC9,C5,C12,C12A,CA15...
ASTM A351	CF3,CF8,CF3M,CF8M,CF8C,CF10,CK20,CF10MC,CN7M,CN3MN,CG6MN,CG8M,CK3MCuN,CG3M...
ASTM A487	4A,4B,4C...
ASTM A494	M35-1,M35-2,N12MV,CW12MW,CW6MC..
ASTM A747	CB7Cu-1,Cu7Cu-2...
ASTM A890	CD4MCu,CD3MCuN...
ASTM A995	CD4MCuN,CE8MN,CD6MN,CD3MN,CE3MN,CD3MWCuN...
NICKEL	NICKEL 200, NICKEL 201...
NICKEL-COPPER	MONEL 400, MONEL 405, MONEL 500...
NICKEL-CHROME-ALLOY	INCONEL 600, INCONEL 601, INCONEL 625, INCONEL 718...
EN 10213	1.0619,1.4308,1.4408,1.4309,1.4409,1.7357,1.7379...

CHANGZHOU KADI INTERNATIONAL

Note: All mentioned names, Trademarks and Part No. are the property of their respective manufacturers, all consumables are not original, are manufactured and sold by KADI CO., reference to the original manufacturer is for convenience only.

Pump valve/Pump frame1



Product Details

Model No:	Pump frame 1 / Customized
Material:	Carbon steel/alloy steel/stainless steel
Type :	Chemical Hardening Sand
Casting Method:	Thermal Gravity Casting
Sand Core Type:	Resin Sand Core
Application:	Oil and Gas
Machining :	CNC machining

ASTM A216	WCB,WCC...
ASTM A352	LCA,LCB,LCC,LC1,LC2,LC3,CA6NM...
ASTM A217	WC1,WC5,WC6,WC9,C5,C12,C12A,CA15...
ASTM A351	CF3,CF8,CF3M,CF8M,CF8C,CF10,CK20,CF10MC,CN7M,CN3MN,CG6MN,CG8M,CK3MCuN,CG3M...
ASTM A487	4A,4B,4C...
ASTM A494	M35-1,M35-2,N12MV,CW12MW,CW6MC..
ASTM A747	CB7Cu-1,Cu7Cu-2...
ASTM A890	CD4MCu,CD3MCuN...
ASTM A995	CD4MCuN,CE8MN,CD6MN,CD3MN,CE3MN,CD3MWCuN...
NICKEL	NICKEL 200, NICKEL 201...
NICKEL-COPPER	MONEL 400, MONEL 405, MONEL 500...
NICKEL-CHROME-ALLOY	INCONEL 600, INCONEL 601, INCONEL 625, INCONEL 718...
EN 10213	1.0619,1.4308,1.4408,1.4309,1.4409,1.7357,1.7379...

CHANGZHOU KADI INTERNATIONAL

Note: All mentioned names, Trademarks and Part No. are the property of their respective manufacturers, all consumables are not original, are manufactured and sold by KADI CO., reference to the original manufacturer is for convenience only.

Pump valve/Pump frame2



Product Details

Model No:	Pump frame 2 / Customized
Material:	Carbon steel/alloy steel/stainless steel
Type :	Chemical Hardening Sand
Casting Method:	Thermal Gravity Casting
Sand Core Type:	Resin Sand Core
Application:	Oil and Gas
Machining :	CNC machining

ASTM A216	WCB,WCC...
ASTM A352	LCA,LCB,LCC,LC1,LC2,LC3,CA6NM...
ASTM A217	WC1,WC5,WC6,WC9,C5,C12,C12A,CA15...
ASTM A351	CF3,CF8,CF3M,CF8M,CF8C,CF10,CK20,CF10MC,CN7M,CN3MN,CG6MN,CG8M,CK3MCuN,CG3M...
ASTM A487	4A,4B,4C...
ASTM A494	M35-1,M35-2,N12MV,CW12MW,CW6MC..
ASTM A747	CB7Cu-1,Cu7Cu-2...
ASTM A890	CD4MCu,CD3MCuN...
ASTM A995	CD4MCuN,CE8MN,CD6MN,CD3MN,CE3MN,CD3MWCuN...
NICKEL	NICKEL 200, NICKEL 201...
NICKEL-COPPER	MONEL 400, MONEL 405, MONEL 500...
NICKEL-CHROME-ALLOY	INCONEL 600, INCONEL 601, INCONEL 625, INCONEL 718...
EN 10213	1.0619,1.4308,1.4408,1.4309,1.4409,1.7357,1.7379...

CHANGZHOU KADI INTERNATIONAL

Note: All mentioned names, Trademarks and Part No. are the property of their respective manufacturers, all consumables are not original, are manufactured and sold by KADI CO., reference to the original manufacturer is for convenience only.

Pump valve/Pump body1



Product Details

Model No:	Pump body 1 / Customized
Material:	Carbon steel/alloy steel/stainless steel
Type :	Chemical Hardening Sand
Casting Method:	Thermal Gravity Casting
Sand Core Type:	Resin Sand Core
Application:	Oil and Gas
Machining :	CNC machining

ASTM A216	WCB,WCC...
ASTM A352	LCA,LCB,LCC,LC1,LC2,LC3,CA6NM...
ASTM A217	WC1,WC5,WC6,WC9,C5,C12,C12A,CA15...
ASTM A351	CF3,CF8,CF3M,CF8M,CF8C,CF10,CK20,CF10MC,CN7M,CN3MN,CG6MN,CG8M,CK3MCuN,CG3M...
ASTM A487	4A,4B,4C...
ASTM A494	M35-1,M35-2,N12MV,CW12MW,CW6MC..
ASTM A747	CB7Cu-1,Cu7Cu-2...
ASTM A890	CD4MCu,CD3MCuN...
ASTM A995	CD4MCuN,CE8MN,CD6MN,CD3MN,CE3MN,CD3MWCuN...
NICKEL	NICKEL 200, NICKEL 201...
NICKEL-COPPER	MONEL 400, MONEL 405, MONEL 500...
NICKEL-CHROME-ALLOY	INCONEL 600, INCONEL 601, INCONEL 625, INCONEL 718...
EN 10213	1.0619,1.4308,1.4408,1.4309,1.4409,1.7357,1.7379...

CHANGZHOU KADI INTERNATIONAL

Note: All mentioned names, Trademarks and Part No. are the property of their respective manufacturers, all consumables are not original, are manufactured and sold by KADI CO., reference to the original manufacturer is for convenience only.

Pump valve/Pump body2



Product Details

Model No:	Pump body 2 / Customized
Material:	Carbon steel/alloy steel/stainless steel
Type :	Chemical Hardening Sand
Casting Method:	Thermal Gravity Casting
Sand Core Type:	Resin Sand Core
Application:	Oil and Gas
Machining :	CNC machining

ASTM A216	WCB,WCC...
ASTM A352	LCA,LCB,LCC,LC1,LC2,LC3,CA6NM...
ASTM A217	WC1,WC5,WC6,WC9,C5,C12,C12A,CA15...
ASTM A351	CF3,CF8,CF3M,CF8M,CF8C,CF10,CK20,CF10MC,CN7M,CN3MN,CG6MN,CG8M,CK3MCuN,CG3M...
ASTM A487	4A,4B,4C...
ASTM A494	M35-1,M35-2,N12MV,CW12MW,CW6MC..
ASTM A747	CB7Cu-1,Cu7Cu-2...
ASTM A890	CD4MCu,CD3MCuN...
ASTM A995	CD4MCuN,CE8MN,CD6MN,CD3MN,CE3MN,CD3MWCuN...
NICKEL	NICKEL 200, NICKEL 201...
NICKEL-COPPER	MONEL 400, MONEL 405, MONEL 500...
NICKEL-CHROME-ALLOY	INCONEL 600, INCONEL 601, INCONEL 625, INCONEL 718...
EN 10213	1.0619,1.4308,1.4408,1.4309,1.4409,1.7357,1.7379...

CHANGZHOU KADI INTERNATIONAL

Note: All mentioned names, Trademarks and Part No. are the property of their respective manufacturers, all consumables are not original, are manufactured and sold by KADI CO., reference to the original manufacturer is for convenience only.

Pump valve/Pump body3



Product Details

Model No:	Pump body 3 / Customized
Material:	Carbon steel/alloy steel/stainless steel
Type :	Chemical Hardening Sand
Casting Method:	Thermal Gravity Casting
Sand Core Type:	Resin Sand Core
Application:	Oil and Gas
Machining :	CNC machining

ASTM A216	WCB,WCC...
ASTM A352	LCA,LCB,LCC,LC1,LC2,LC3,CA6NM...
ASTM A217	WC1,WC5,WC6,WC9,C5,C12,C12A,CA15...
ASTM A351	CF3,CF8,CF3M,CF8M,CF8C,CF10,CK20,CF10MC,CN7M,CN3MN,CG6MN,CG8M,CK3MCuN,CG3M...
ASTM A487	4A,4B,4C...
ASTM A494	M35-1,M35-2,N12MV,CW12MW,CW6MC..
ASTM A747	CB7Cu-1,Cu7Cu-2...
ASTM A890	CD4MCu,CD3MCuN...
ASTM A995	CD4MCuN,CE8MN,CD6MN,CD3MN,CE3MN,CD3MWCuN...
NICKEL	NICKEL 200, NICKEL 201...
NICKEL-COPPER	MONEL 400, MONEL 405, MONEL 500...
NICKEL-CHROME-ALLOY	INCONEL 600, INCONEL 601, INCONEL 625, INCONEL 718...
EN 10213	1.0619,1.4308,1.4408,1.4309,1.4409,1.7357,1.7379...

CHANGZHOU KADI INTERNATIONAL

Note: All mentioned names, Trademarks and Part No. are the property of their respective manufacturers, all consumables are not original, are manufactured and sold by KADI CO., reference to the original manufacturer is for convenience only.

Pump valve/Pump body4



Product Details

Model No:	Pump body 4 / Customized
Material:	Carbon steel/alloy steel/stainless steel
Type :	Chemical Hardening Sand
Casting Method:	Thermal Gravity Casting
Sand Core Type:	Resin Sand Core
Application:	Oil and Gas
Machining :	CNC machining

ASTM A216	WCB,WCC...
ASTM A352	LCA,LCB,LCC,LC1,LC2,LC3,CA6NM...
ASTM A217	WC1,WC5,WC6,WC9,C5,C12,C12A,CA15...
ASTM A351	CF3,CF8,CF3M,CF8M,CF8C,CF10,CK20,CF10MC,CN7M,CN3MN,CG6MN,CG8M,CK3MCuN,CG3M...
ASTM A487	4A,4B,4C...
ASTM A494	M35-1,M35-2,N12MV,CW12MW,CW6MC..
ASTM A747	CB7Cu-1,Cu7Cu-2...
ASTM A890	CD4MCu,CD3MCuN...
ASTM A995	CD4MCuN,CE8MN,CD6MN,CD3MN,CE3MN,CD3MWCuN...
NICKEL	NICKEL 200, NICKEL 201...
NICKEL-COPPER	MONEL 400, MONEL 405, MONEL 500...
NICKEL-CHROME-ALLOY	INCONEL 600, INCONEL 601, INCONEL 625, INCONEL 718...
EN 10213	1.0619,1.4308,1.4408,1.4309,1.4409,1.7357,1.7379...

CHANGZHOU KADI INTERNATIONAL

Note: All mentioned names, Trademarks and Part No. are the property of their respective manufacturers, all consumables are not original, are manufactured and sold by KADI CO, reference to the original manufacturer is for convenience only.

Pump valve/Pump body5



Product Details

Model No:	Pump body 5 / Customized
Material:	Carbon steel/alloy steel/stainless steel
Type :	Chemical Hardening Sand
Casting Method:	Thermal Gravity Casting
Sand Core Type:	Resin Sand Core
Application:	Oil and Gas
Machining :	CNC machining

ASTM A216	WCB,WCC...
ASTM A352	LCA,LCB,LCC,LC1,LC2,LC3,CA6NM...
ASTM A217	WC1,WC5,WC6,WC9,C5,C12,C12A,CA15...
ASTM A351	CF3,CF8,CF3M,CF8M,CF8C,CF10,CK20,CF10MC,CN7M,CN3MN,CG6MN,CG8M,CK3MCuN,CG3M...
ASTM A487	4A,4B,4C...
ASTM A494	M35-1,M35-2,N12MV,CW12MW,CW6MC..
ASTM A747	CB7Cu-1,Cu7Cu-2...
ASTM A890	CD4MCu,CD3MCuN...
ASTM A995	CD4MCuN,CE8MN,CD6MN,CD3MN,CE3MN,CD3MWCuN...
NICKEL	NICKEL 200, NICKEL 201...
NICKEL-COPPER	MONEL 400, MONEL 405, MONEL 500...
NICKEL-CHROME-ALLOY	INCONEL 600, INCONEL 601, INCONEL 625, INCONEL 718...
EN 10213	1.0619,1.4308,1.4408,1.4309,1.4409,1.7357,1.7379...

CHANGZHOU KADI INTERNATIONAL

Note: All mentioned names, Trademarks and Part No. are the property of their respective manufacturers, all consumables are not original, are manufactured and sold by KADI CO., reference to the original manufacturer is for convenience only.

Pump valve/Pipeline valve1



Product Details

Model No:	Pipeline valve 1 / Customized
Material:	Carbon steel/alloy steel/stainless steel
Type :	Chemical Hardening Sand
Casting Method:	Thermal Gravity Casting
Sand Core Type:	Resin Sand Core
Application:	Oil and Gas
Machining :	CNC machining

ASTM A216	WCB,WCC...
ASTM A352	LCA,LCB,LCC,LC1,LC2,LC3,CA6NM...
ASTM A217	WC1,WC5,WC6,WC9,C5,C12,C12A,CA15...
ASTM A351	CF3,CF8,CF3M,CF8M,CF8C,CF10,CK20,CF10MC,CN7M,CN3MN,CG6MN,CG8M,CK3MCuN,CG3M...
ASTM A487	4A,4B,4C...
ASTM A494	M35-1,M35-2,N12MV,CW12MW,CW6MC..
ASTM A747	CB7Cu-1,Cu7Cu-2...
ASTM A890	CD4MCu,CD3MCuN...
ASTM A995	CD4MCuN,CE8MN,CD6MN,CD3MN,CE3MN,CD3MWCuN...
NICKEL	NICKEL 200, NICKEL 201...
NICKEL-COPPER	MONEL 400, MONEL 405, MONEL 500...
NICKEL-CHROME-ALLOY	INCONEL 600, INCONEL 601, INCONEL 625, INCONEL 718...
EN 10213	1.0619,1.4308,1.4408,1.4309,1.4409,1.7357,1.7379...

CHANGZHOU KADI INTERNATIONAL

Note: All mentioned names, Trademarks and Part No. are the property of their respective manufacturers, all consumables are not original, are manufactured and sold by KADI CO., reference to the original manufacturer is for convenience only.

Pump valve/Pipeline valve2



Product Details

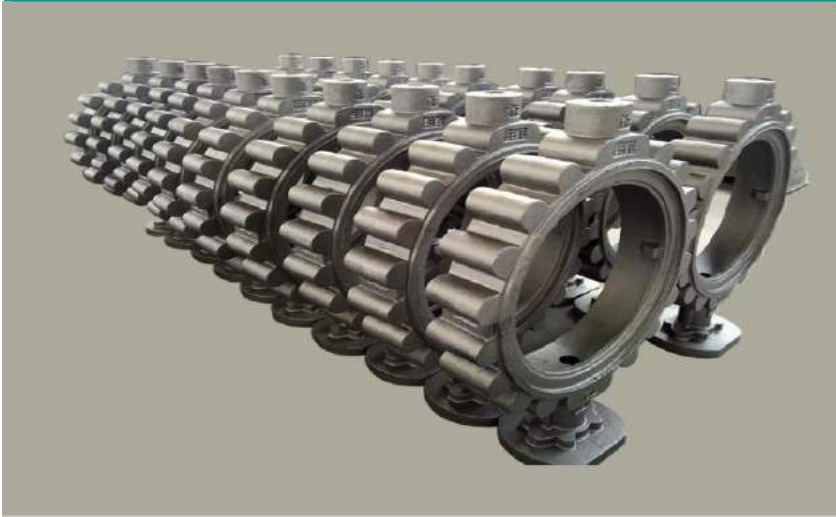
Model No:	Pipeline valve 2 / Customized
Material:	Carbon steel/alloy steel/stainless steel
Type :	Chemical Hardening Sand
Casting Method:	Thermal Gravity Casting
Sand Core Type:	Resin Sand Core
Application:	Oil and Gas
Machining :	CNC machining

ASTM A216	WCB,WCC...
ASTM A352	LCA,LCB,LCC,LC1,LC2,LC3,CA6NM...
ASTM A217	WC1,WC5,WC6,WC9,C5,C12,C12A,CA15...
ASTM A351	CF3,CF8,CF3M,CF8M,CF8C,CF10,CK20,CF10MC,CN7M,CN3MN,CG6MN,CG8M,CK3MCuN,CG3M...
ASTM A487	4A,4B,4C...
ASTM A494	M35-1,M35-2,N12MV,CW12MW,CW6MC..
ASTM A747	CB7Cu-1,Cu7Cu-2...
ASTM A890	CD4MCu,CD3MCuN...
ASTM A995	CD4MCuN,CE8MN,CD6MN,CD3MN,CE3MN,CD3MWCuN...
NICKEL	NICKEL 200, NICKEL 201...
NICKEL-COPPER	MONEL 400, MONEL 405, MONEL 500...
NICKEL-CHROME-ALLOY	INCONEL 600, INCONEL 601, INCONEL 625, INCONEL 718...
EN 10213	1.0619,1.4308,1.4408,1.4309,1.4409,1.7357,1.7379...

CHANGZHOU KADI INTERNATIONAL

Note: All mentioned names, Trademarks and Part No. are the property of their respective manufacturers, all consumables are not original, are manufactured and sold by KADI CO., reference to the original manufacturer is for convenience only.

Pump valve/Butterfly valves1



Product Details

Model No:	Butterfly valves 1 / Customized
Material:	Carbon steel/alloy steel/stainless steel
Type :	Chemical Hardening Sand
Casting Method:	Thermal Gravity Casting
Sand Core Type:	Resin Sand Core
Application:	Oil and Gas
Machining :	CNC machining

ASTM A216	WCB,WCC...
ASTM A352	LCA,LCB,LCC,LC1,LC2,LC3,CA6NM...
ASTM A217	WC1,WC5,WC6,WC9,C5,C12,C12A,CA15...
ASTM A351	CF3,CF8,CF3M,CF8M,CF8C,CF10,CK20,CF10MC,CN7M,CN3MN,CG6MN,CG8M,CK3MCuN,CG3M...
ASTM A487	4A,4B,4C...
ASTM A494	M35-1,M35-2,N12MV,CW12MW,CW6MC..
ASTM A747	CB7Cu-1,Cu7Cu-2...
ASTM A890	CD4MCu,CD3MCuN...
ASTM A995	CD4MCuN,CE8MN,CD6MN,CD3MN,CE3MN,CD3MWCuN...
NICKEL	NICKEL 200, NICKEL 201...
NICKEL-COPPER	MONEL 400, MONEL 405, MONEL 500...
NICKEL-CHROME-ALLOY	INCONEL 600, INCONEL 601, INCONEL 625, INCONEL 718...
EN 10213	1.0619,1.4308,1.4408,1.4309,1.4409,1.7357,1.7379...

Note: All mentioned names, Trademarks and Part No. are the property of their respective manufacturers, all consumables are not original, are manufactured and sold by KADI CO., reference to the original manufacturer is for convenience only.

Pump valve/Butterfly valves2



Product Details

Model No:	Butterfly valves 2 / Customized
Material:	Carbon steel/alloy steel/stainless steel
Type :	Chemical Hardening Sand
Casting Method:	Thermal Gravity Casting
Sand Core Type:	Resin Sand Core
Application:	Oil and Gas
Machining :	CNC machining

ASTM A216	WCB,WCC...
ASTM A352	LCA,LCB,LCC,LC1,LC2,LC3,CA6NM...
ASTM A217	WC1,WC5,WC6,WC9,C5,C12,C12A,CA15...
ASTM A351	CF3,CF8,CF3M,CF8M,CF8C,CF10,CK20,CF10MC,CN7M,CN3MN,CG6MN,CG8M,CK3MCuN,CG3M...
ASTM A487	4A,4B,4C...
ASTM A494	M35-1,M35-2,N12MV,CW12MW,CW6MC..
ASTM A747	CB7Cu-1,Cu7Cu-2...
ASTM A890	CD4MCu,CD3MCuN...
ASTM A995	CD4MCuN,CE8MN,CD6MN,CD3MN,CE3MN,CD3MWCuN...
NICKEL	NICKEL 200, NICKEL 201...
NICKEL-COPPER	MONEL 400, MONEL 405, MONEL 500...
NICKEL-CHROME-ALLOY	INCONEL 600, INCONEL 601, INCONEL 625, INCONEL 718...
EN 10213	1.0619,1.4308,1.4408,1.4309,1.4409,1.7357,1.7379...

Note: All mentioned names, Trademarks and Part No. are the property of their respective manufacturers, all consumables are not original, are manufactured and sold by KADI CO., reference to the original manufacturer is for convenience only.

Pump valve/Butterfly valves3



Product Details

Model No:	Butterfly valves 3 / Customized
Material:	Carbon steel/alloy steel/stainless steel
Type :	Chemical Hardening Sand
Casting Method:	Thermal Gravity Casting
Sand Core Type:	Resin Sand Core
Application:	Oil and Gas
Machining :	CNC machining

ASTM A216	WCB,WCC...
ASTM A352	LCA,LCB,LCC,LC1,LC2,LC3,CA6NM...
ASTM A217	WC1,WC5,WC6,WC9,C5,C12,C12A,CA15...
ASTM A351	CF3,CF8,CF3M,CF8M,CF8C,CF10,CK20,CF10MC,CN7M,CN3MN,CG6MN,CG8M,CK3MCuN,CG3M...
ASTM A487	4A,4B,4C...
ASTM A494	M35-1,M35-2,N12MV,CW12MW,CW6MC..
ASTM A747	CB7Cu-1,Cu7Cu-2...
ASTM A890	CD4MCu,CD3MCuN...
ASTM A995	CD4MCuN,CE8MN,CD6MN,CD3MN,CE3MN,CD3MWCuN...
NICKEL	NICKEL 200, NICKEL 201...
NICKEL-COPPER	MONEL 400, MONEL 405, MONEL 500...
NICKEL-CHROME-ALLOY	INCONEL 600, INCONEL 601, INCONEL 625, INCONEL 718...
EN 10213	1.0619,1.4308,1.4408,1.4309,1.4409,1.7357,1.7379...

Note: All mentioned names, Trademarks and Part No. are the property of their respective manufacturers, all consumables are not original, are manufactured and sold by KADI CO., reference to the original manufacturer is for convenience only.

Pump valve/Fixed seat



Product Details

Model No:	Fixed seat / Customized
Material:	Carbon steel/alloy steel/stainless steel
Type :	Chemical Hardening Sand
Casting Method:	Thermal Gravity Casting
Sand Core Type:	Resin Sand Core
Application:	Oil and Gas
Machining :	CNC machining

ASTM A216	WCB,WCC...
ASTM A352	LCA,LCB,LCC,LC1,LC2,LC3,CA6NM...
ASTM A217	WC1,WC5,WC6,WC9,C5,C12,C12A,CA15...
ASTM A351	CF3,CF8,CF3M,CF8M,CF8C,CF10,CK20,CF10MC,CN7M,CN3MN,CG6MN,CG8M,CK3MCuN,CG3M...
ASTM A487	4A,4B,4C...
ASTM A494	M35-1,M35-2,N12MV,CW12MW,CW6MC..
ASTM A747	CB7Cu-1,Cu7Cu-2...
ASTM A890	CD4MCu,CD3MCuN...
ASTM A995	CD4MCuN,CE8MN,CD6MN,CD3MN,CE3MN,CD3MWCuN...
NICKEL	NICKEL 200, NICKEL 201...
NICKEL-COPPER	MONEL 400, MONEL 405, MONEL 500...
NICKEL-CHROME-ALLOY	INCONEL 600, INCONEL 601, INCONEL 625, INCONEL 718...
EN 10213	1.0619,1.4308,1.4408,1.4309,1.4409,1.7357,1.7379...

Note: All mentioned names, Trademarks and Part No. are the property of their respective manufacturers, all consumables are not original, are manufactured and sold by KADI CO., reference to the original manufacturer is for convenience only.

Pump valve/Piping pumps



Product Details

Model No:	Piping pumps / Customized
Material:	Carbon steel/alloy steel/stainless steel
Type :	Chemical Hardening Sand
Casting Method:	Thermal Gravity Casting
Sand Core Type:	Resin Sand Core
Application:	Oil and Gas
Machining :	CNC machining

ASTM A216	WCB,WCC...
ASTM A352	LCA,LCB,LCC,LC1,LC2,LC3,CA6NM...
ASTM A217	WC1,WC5,WC6,WC9,C5,C12,C12A,CA15...
ASTM A351	CF3,CF8,CF3M,CF8M,CF8C,CF10,CK20,CF10MC,CN7M,CN3MN,CG6MN,CG8M,CK3MCuN,CG3M...
ASTM A487	4A,4B,4C...
ASTM A494	M35-1,M35-2,N12MV,CW12MW,CW6MC..
ASTM A747	CB7Cu-1,Cu7Cu-2...
ASTM A890	CD4MCu,CD3MCuN...
ASTM A995	CD4MCuN,CE8MN,CD6MN,CD3MN,CE3MN,CD3MWCuN...
NICKEL	NICKEL 200, NICKEL 201...
NICKEL-COPPER	MONEL 400, MONEL 405, MONEL 500...
NICKEL-CHROME-ALLOY	INCONEL 600, INCONEL 601, INCONEL 625, INCONEL 718...
EN 10213	1.0619,1.4308,1.4408,1.4309,1.4409,1.7357,1.7379...

Note: All mentioned names, Trademarks and Part No. are the property of their respective manufacturers, all consumables are not original, are manufactured and sold by KADI CO., reference to the original manufacturer is for convenience only.

Pump valve/Valve body



Product Details

Model No:	Valve body / Customized
Material:	Carbon steel/alloy steel/stainless steel
Type :	Chemical Hardening Sand
Casting Method:	Thermal Gravity Casting
Sand Core Type:	Resin Sand Core
Application:	Oil and Gas
Machining :	CNC machining

ASTM A216	WCB,WCC...
ASTM A352	LCA,LCB,LCC,LC1,LC2,LC3,CA6NM...
ASTM A217	WC1,WC5,WC6,WC9,C5,C12,C12A,CA15...
ASTM A351	CF3,CF8,CF3M,CF8M,CF8C,CF10,CK20,CF10MC,CN7M,CN3MN,CG6MN,CG8M,CK3MCuN,CG3M...
ASTM A487	4A,4B,4C...
ASTM A494	M35-1,M35-2,N12MV,CW12MW,CW6MC..
ASTM A747	CB7Cu-1,Cu7Cu-2...
ASTM A890	CD4MCu,CD3MCuN...
ASTM A995	CD4MCuN,CE8MN,CD6MN,CD3MN,CE3MN,CD3MWCuN...
NICKEL	NICKEL 200, NICKEL 201...
NICKEL-COPPER	MONEL 400, MONEL 405, MONEL 500...
NICKEL-CHROME-ALLOY	INCONEL 600, INCONEL 601, INCONEL 625, INCONEL 718...
EN 10213	1.0619,1.4308,1.4408,1.4309,1.4409,1.7357,1.7379...

Note: All mentioned names, Trademarks and Part No. are the property of their respective manufacturers, all consumables are not original, are manufactured and sold by KADI CO., reference to the original manufacturer is for convenience only.

Pump valve/Multistage pump



Product Details

Model No:	Multistage pump / Customized
Material:	Carbon steel/alloy steel/stainless steel
Type :	Chemical Hardening Sand
Casting Method:	Thermal Gravity Casting
Sand Core Type:	Resin Sand Core
Application:	Oil and Gas
Machining :	CNC machining

ASTM A216	WCB,WCC...
ASTM A352	LCA,LCB,LCC,LC1,LC2,LC3,CA6NM...
ASTM A217	WC1,WC5,WC6,WC9,C5,C12,C12A,CA15...
ASTM A351	CF3,CF8,CF3M,CF8M,CF8C,CF10,CK20,CF10MC,CN7M,CN3MN,CG6MN,CG8M,CK3MCuN,CG3M...
ASTM A487	4A,4B,4C...
ASTM A494	M35-1,M35-2,N12MV,CW12MW,CW6MC..
ASTM A747	CB7Cu-1,Cu7Cu-2...
ASTM A890	CD4MCu,CD3MCuN...
ASTM A995	CD4MCuN,CE8MN,CD6MN,CD3MN,CE3MN,CD3MWCuN...
NICKEL	NICKEL 200, NICKEL 201...
NICKEL-COPPER	MONEL 400, MONEL 405, MONEL 500...
NICKEL-CHROME-ALLOY	INCONEL 600, INCONEL 601, INCONEL 625, INCONEL 718...
EN 10213	1.0619,1.4308,1.4408,1.4309,1.4409,1.7357,1.7379...

Note: All mentioned names, Trademarks and Part No. are the property of their respective manufacturers, all consumables are not original, are manufactured and sold by KADI CO., reference to the original manufacturer is for convenience only.

Pump valve/Mid pump body



Product Details

Model No:	Mid pump body / Customized
Material:	Carbon steel/alloy steel/stainless steel
Type :	Chemical Hardening Sand
Casting Method:	Thermal Gravity Casting
Sand Core Type:	Resin Sand Core
Application:	Oil and Gas
Machining :	CNC machining

ASTM A216	WCB,WCC...
ASTM A352	LCA,LCB,LCC,LC1,LC2,LC3,CA6NM...
ASTM A217	WC1,WC5,WC6,WC9,C5,C12,C12A,CA15...
ASTM A351	CF3,CF8,CF3M,CF8M,CF8C,CF10,CK20,CF10MC,CN7M,CN3MN,CG6MN,CG8M,CK3MCuN,CG3M...
ASTM A487	4A,4B,4C...
ASTM A494	M35-1,M35-2,N12MV,CW12MW,CW6MC..
ASTM A747	CB7Cu-1,Cu7Cu-2...
ASTM A890	CD4MCu,CD3MCuN...
ASTM A995	CD4MCuN,CE8MN,CD6MN,CD3MN,CE3MN,CD3MWCuN...
NICKEL	NICKEL 200, NICKEL 201...
NICKEL-COPPER	MONEL 400, MONEL 405, MONEL 500...
NICKEL-CHROME-ALLOY	INCONEL 600, INCONEL 601, INCONEL 625, INCONEL 718...
EN 10213	1.0619,1.4308,1.4408,1.4309,1.4409,1.7357,1.7379...

Note: All mentioned names, Trademarks and Part No. are the property of their respective manufacturers, all consumables are not original, are manufactured and sold by KADI CO., reference to the original manufacturer is for convenience only.

Pump valve/High pressure valve body



Product Details

Model No:	High pressure valve body / Customized
Material:	Carbon steel/alloy steel/stainless steel
Type :	Chemical Hardening Sand
Casting Method:	Thermal Gravity Casting
Sand Core Type:	Resin Sand Core
Application:	Oil and Gas
Machining :	CNC machining

ASTM A216	WCB,WCC...
ASTM A352	LCA,LCB,LCC,LC1,LC2,LC3,CA6NM...
ASTM A217	WC1,WC5,WC6,WC9,C5,C12,C12A,CA15...
ASTM A351	CF3,CF8,CF3M,CF8M,CF8C,CF10,CK20,CF10MC,CN7M,CN3MN,CG6MN,CG8M,CK3MCuN,CG3M...
ASTM A487	4A,4B,4C...
ASTM A494	M35-1,M35-2,N12MV,CW12MW,CW6MC..
ASTM A747	CB7Cu-1,Cu7Cu-2...
ASTM A890	CD4MCu,CD3MCuN...
ASTM A995	CD4MCuN,CE8MN,CD6MN,CD3MN,CE3MN,CD3MWCuN...
NICKEL	NICKEL 200, NICKEL 201...
NICKEL-COPPER	MONEL 400, MONEL 405, MONEL 500...
NICKEL-CHROME-ALLOY	INCONEL 600, INCONEL 601, INCONEL 625, INCONEL 718...
EN 10213	1.0619,1.4308,1.4408,1.4309,1.4409,1.7357,1.7379...

CHANGZHOU KADI INTERNATIONAL

Note: All mentioned names, Trademarks and Part No. are the property of their respective manufacturers, all consumables are not original, are manufactured and sold by KADI CO., reference to the original manufacturer is for convenience only.

Pump valve/Immerisible pump



Product Details

Model No:	Immersible pump / Customized
Material:	Carbon steel/alloy steel/stainless steel
Type :	Chemical Hardening Sand
Casting Method:	Thermal Gravity Casting
Sand Core Type:	Resin Sand Core
Application:	Oil and Gas
Machining :	CNC machining

ASTM A216	WCB,WCC...
ASTM A352	LCA,LCB,LCC,LC1,LC2,LC3,CA6NM...
ASTM A217	WC1,WC5,WC6,WC9,C5,C12,C12A,CA15...
ASTM A351	CF3,CF8,CF3M,CF8M,CF8C,CF10,CK20,CF10MC,CN7M,CN3MN,CG6MN,CG8M,CK3MCuN,CG3M...
ASTM A487	4A,4B,4C...
ASTM A494	M35-1,M35-2,N12MV,CW12MW,CW6MC..
ASTM A747	CB7Cu-1,Cu7Cu-2...
ASTM A890	CD4MCu,CD3MCuN...
ASTM A995	CD4MCuN,CE8MN,CD6MN,CD3MN,CE3MN,CD3MWCuN...
NICKEL	NICKEL 200, NICKEL 201...
NICKEL-COPPER	MONEL 400, MONEL 405, MONEL 500...
NICKEL-CHROME-ALLOY	INCONEL 600, INCONEL 601, INCONEL 625, INCONEL 718...
EN 10213	1.0619,1.4308,1.4408,1.4309,1.4409,1.7357,1.7379...

Note: All mentioned names, Trademarks and Part No. are the property of their respective manufacturers, all consumables are not original, are manufactured and sold by KADI CO., reference to the original manufacturer is for convenience only.

Lifting equipment/Base of the remote cylinder



Product Details

Model No:	Base of the remote cylinder / Customized
Material:	Carbon steel/alloy steel/stainless steel
Type :	Chemical Hardening Sand
Casting Method:	Thermal Gravity Casting
Sand Core Type:	Resin Sand Core
Application:	Oil and Gas
Machining :	CNC machining

ASTM A216	WCB,WCC...
ASTM A352	LCA,LCB,LCC,LC1,LC2,LC3,CA6NM...
ASTM A217	WC1,WC5,WC6,WC9,C5,C12,C12A,CA15...
ASTM A351	CF3,CF8,CF3M,CF8M,CF8C,CF10,CK20,CF10MC,CN7M,CN3MN,CG6MN,CG8M,CK3MCuN,CG3M...
ASTM A487	4A,4B,4C...
ASTM A494	M35-1,M35-2,N12MV,CW12MW,CW6MC..
ASTM A747	CB7Cu-1,Cu7Cu-2...
ASTM A890	CD4MCu,CD3MCuN...
ASTM A995	CD4MCuN,CE8MN,CD6MN,CD3MN,CE3MN,CD3MWCuN...
NICKEL	NICKEL 200, NICKEL 201...
NICKEL-COPPER	MONEL 400, MONEL 405, MONEL 500...
NICKEL-CHROME-ALLOY	INCONEL 600, INCONEL 601, INCONEL 625, INCONEL 718...
EN 10213	1.0619,1.4308,1.4408,1.4309,1.4409,1.7357,1.7379...

CHANGZHOU KADI INTERNATIONAL

Note: All mentioned names, Trademarks and Part No. are the property of their respective manufacturers, all consumables are not original, are manufactured and sold by KADI CO., reference to the original manufacturer is for convenience only.

Lifting equipment/Base



Product Details

Model No:	Base / Customized
Material:	Carbon steel/alloy steel/stainless steel
Type :	Chemical Hardening Sand
Casting Method:	Thermal Gravity Casting
Sand Core Type:	Resin Sand Core
Application:	Oil and Gas
Machining :	CNC machining

ASTM A216	WCB,WCC...
ASTM A352	LCA,LCB,LCC,LC1,LC2,LC3,CA6NM...
ASTM A217	WC1,WC5,WC6,WC9,C5,C12,C12A,CA15...
ASTM A351	CF3,CF8,CF3M,CF8M,CF8C,CF10,CK20,CF10MC,CN7M,CN3MN,CG6MN,CG8M,CK3MCuN,CG3M...
ASTM A487	4A,4B,4C...
ASTM A494	M35-1,M35-2,N12MV,CW12MW,CW6MC..
ASTM A747	CB7Cu-1,Cu7Cu-2...
ASTM A890	CD4MCu,CD3MCuN...
ASTM A995	CD4MCuN,CE8MN,CD6MN,CD3MN,CE3MN,CD3MWCuN...
NICKEL	NICKEL 200, NICKEL 201...
NICKEL-COPPER	MONEL 400, MONEL 405, MONEL 500...
NICKEL-CHROME-ALLOY	INCONEL 600, INCONEL 601, INCONEL 625, INCONEL 718...
EN 10213	1.0619,1.4308,1.4408,1.4309,1.4409,1.7357,1.7379...

Note: All mentioned names, Trademarks and Part No. are the property of their respective manufacturers, all consumables are not original, are manufactured and sold by KADI CO., reference to the original manufacturer is for convenience only.

Lifting equipment/Safety pinion



Product Details

Model No:	Safety pinion / Customized
Material:	Carbon steel/alloy steel/stainless steel
Type :	Chemical Hardening Sand
Casting Method:	Thermal Gravity Casting
Sand Core Type:	Resin Sand Core
Application:	Oil and Gas
Machining :	CNC machining

ASTM A216	WCB,WCC...
ASTM A352	LCA,LCB,LCC,LC1,LC2,LC3,CA6NM...
ASTM A217	WC1,WC5,WC6,WC9,C5,C12,C12A,CA15...
ASTM A351	CF3,CF8,CF3M,CF8M,CF8C,CF10,CK20,CF10MC,CN7M,CN3MN,CG6MN,CG8M,CK3MCuN,CG3M...
ASTM A487	4A,4B,4C...
ASTM A494	M35-1,M35-2,N12MV,CW12MW,CW6MC..
ASTM A747	CB7Cu-1,Cu7Cu-2...
ASTM A890	CD4MCu,CD3MCuN...
ASTM A995	CD4MCuN,CE8MN,CD6MN,CD3MN,CE3MN,CD3MWCuN...
NICKEL	NICKEL 200, NICKEL 201...
NICKEL-COPPER	MONEL 400, MONEL 405, MONEL 500...
NICKEL-CHROME-ALLOY	INCONEL 600, INCONEL 601, INCONEL 625, INCONEL 718...
EN 10213	1.0619,1.4308,1.4408,1.4309,1.4409,1.7357,1.7379...

Note: All mentioned names, Trademarks and Part No. are the property of their respective manufacturers, all consumables are not original, are manufactured and sold by KADI CO., reference to the original manufacturer is for convenience only.

Lifting equipment/Pull rod



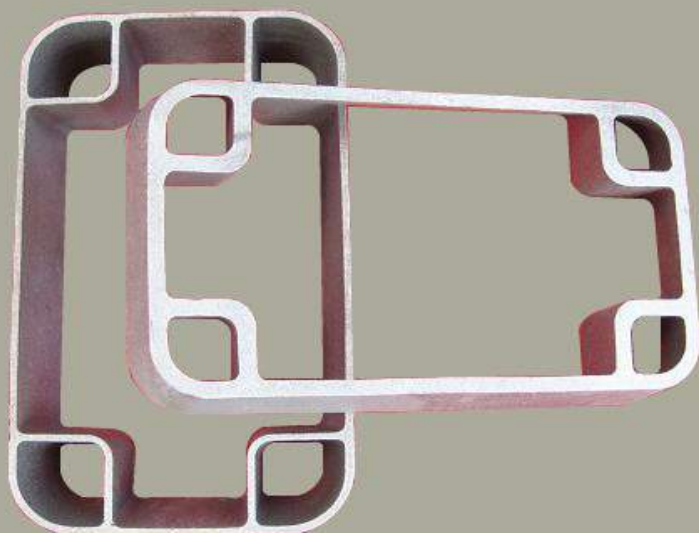
Product Details

Model No:	Pull rod / Customized
Material:	Carbon steel/alloy steel/stainless steel
Type :	Chemical Hardening Sand
Casting Method:	Thermal Gravity Casting
Sand Core Type:	Resin Sand Core
Application:	Oil and Gas
Machining :	CNC machining

ASTM A216	WCB,WCC...
ASTM A352	LCA,LCB,LCC,LC1,LC2,LC3,CA6NM...
ASTM A217	WC1,WC5,WC6,WC9,C5,C12,C12A,CA15...
ASTM A351	CF3,CF8,CF3M,CF8M,CF8C,CF10,CK20,CF10MC,CN7M,CN3MN,CG6MN,CG8M,CK3MCuN,CG3M...
ASTM A487	4A,4B,4C...
ASTM A494	M35-1,M35-2,N12MV,CW12MW,CW6MC..
ASTM A747	CB7Cu-1,Cu7Cu-2...
ASTM A890	CD4MCu,CD3MCuN...
ASTM A995	CD4MCuN,CE8MN,CD6MN,CD3MN,CE3MN,CD3MWCuN...
NICKEL	NICKEL 200, NICKEL 201...
NICKEL-COPPER	MONEL 400, MONEL 405, MONEL 500...
NICKEL-CHROME-ALLOY	INCONEL 600, INCONEL 601, INCONEL 625, INCONEL 718...
EN 10213	1.0619,1.4308,1.4408,1.4309,1.4409,1.7357,1.7379...

Note: All mentioned names, Trademarks and Part No. are the property of their respective manufacturers, all consumables are not original, are manufactured and sold by KADI CO., reference to the original manufacturer is for convenience only.

Lifting equipment/Gasket



Product Details

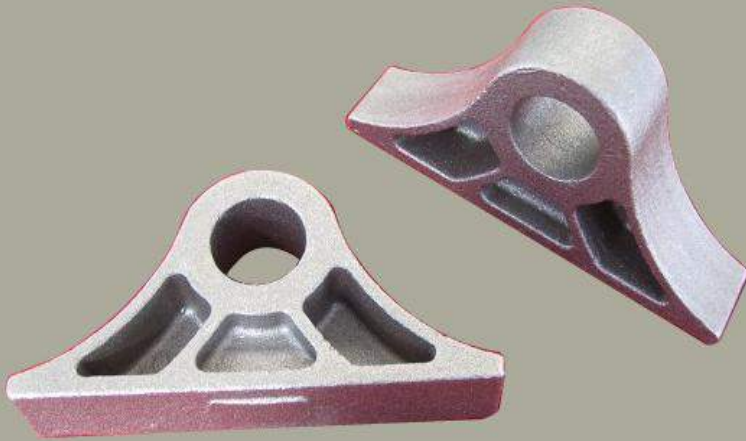
Model No:	Gasket / Customized
Material:	Carbon steel/alloy steel/stainless steel
Type :	Chemical Hardening Sand
Casting Method:	Thermal Gravity Casting
Sand Core Type:	Resin Sand Core
Application:	Oil and Gas
Machining :	CNC machining

ASTM A216	WCB,WCC...
ASTM A352	LCA,LCB,LCC,LC1,LC2,LC3,CA6NM...
ASTM A217	WC1,WC5,WC6,WC9,C5,C12,C12A,CA15...
ASTM A351	CF3,CF8,CF3M,CF8M,CF8C,CF10,CK20,CF10MC,CN7M,CN3MN,CG6MN,CG8M,CK3MCuN,CG3M...
ASTM A487	4A,4B,4C...
ASTM A494	M35-1,M35-2,N12MV,CW12MW,CW6MC..
ASTM A747	CB7Cu-1,Cu7Cu-2...
ASTM A890	CD4MCu,CD3MCuN...
ASTM A995	CD4MCuN,CE8MN,CD6MN,CD3MN,CE3MN,CD3MWCuN...
NICKEL	NICKEL 200, NICKEL 201...
NICKEL-COPPER	MONEL 400, MONEL 405, MONEL 500...
NICKEL-CHROME-ALLOY	INCONEL 600, INCONEL 601, INCONEL 625, INCONEL 718...
EN 10213	1.0619,1.4308,1.4408,1.4309,1.4409,1.7357,1.7379...

CHANGZHOU KADI INTERNATIONAL

Note: All mentioned names, Trademarks and Part No. are the property of their respective manufacturers, all consumables are not original, are manufactured and sold by KADI CO., reference to the original manufacturer is for convenience only.

Lifting equipment/Small holder



Product Details

Model No:	Small holder / Customized
Material:	Carbon steel/alloy steel/stainless steel
Type :	Chemical Hardening Sand
Casting Method:	Thermal Gravity Casting
Sand Core Type:	Resin Sand Core
Application:	Oil and Gas
Machining :	CNC machining

ASTM A216	WCB,WCC...
ASTM A352	LCA,LCB,LCC,LC1,LC2,LC3,CA6NM...
ASTM A217	WC1,WC5,WC6,WC9,C5,C12,C12A,CA15...
ASTM A351	CF3,CF8,CF3M,CF8M,CF8C,CF10,CK20,CF10MC,CN7M,CN3MN,CG6MN,CG8M,CK3MCuN,CG3M...
ASTM A487	4A,4B,4C...
ASTM A494	M35-1,M35-2,N12MV,CW12MW,CW6MC..
ASTM A747	CB7Cu-1,Cu7Cu-2...
ASTM A890	CD4MCu,CD3MCuN...
ASTM A995	CD4MCuN,CE8MN,CD6MN,CD3MN,CE3MN,CD3MWCuN...
NICKEL	NICKEL 200, NICKEL 201...
NICKEL-COPPER	MONEL 400, MONEL 405, MONEL 500...
NICKEL-CHROME-ALLOY	INCONEL 600, INCONEL 601, INCONEL 625, INCONEL 718...
EN 10213	1.0619,1.4308,1.4408,1.4309,1.4409,1.7357,1.7379...

CHANGZHOU KADI INTERNATIONAL

Note: All mentioned names, Trademarks and Part No. are the property of their respective manufacturers, all consumables are not original, are manufactured and sold by KADI CO., reference to the original manufacturer is for convenience only.

Lifting equipment/Long holder



Product Details

Model No:	Long holder / Customized
Material:	Carbon steel/alloy steel/stainless steel
Type :	Chemical Hardening Sand
Casting Method:	Thermal Gravity Casting
Sand Core Type:	Resin Sand Core
Application:	Oil and Gas
Machining :	CNC machining

ASTM A216	WCB,WCC...
ASTM A352	LCA,LCB,LCC,LC1,LC2,LC3,CA6NM...
ASTM A217	WC1,WC5,WC6,WC9,C5,C12,C12A,CA15...
ASTM A351	CF3,CF8,CF3M,CF8M,CF8C,CF10,CK20,CF10MC,CN7M,CN3MN,CG6MN,CG8M,CK3MCuN,CG3M...
ASTM A487	4A,4B,4C...
ASTM A494	M35-1,M35-2,N12MV,CW12MW,CW6MC..
ASTM A747	CB7Cu-1,Cu7Cu-2...
ASTM A890	CD4MCu,CD3MCuN...
ASTM A995	CD4MCuN,CE8MN,CD6MN,CD3MN,CE3MN,CD3MWCuN...
NICKEL	NICKEL 200, NICKEL 201...
NICKEL-COPPER	MONEL 400, MONEL 405, MONEL 500...
NICKEL-CHROME-ALLOY	INCONEL 600, INCONEL 601, INCONEL 625, INCONEL 718...
EN 10213	1.0619,1.4308,1.4408,1.4309,1.4409,1.7357,1.7379...

CHANGZHOU KADI INTERNATIONAL

Note: All mentioned names, Trademarks and Part No. are the property of their respective manufacturers, all consumables are not original, are manufactured and sold by KADI CO., reference to the original manufacturer is for convenience only.

Metallurgical equipment accessories/Drain hole



Product Details

Model No:	Drain hole / Customized
Material:	Carbon steel/alloy steel/stainless steel
Type :	Chemical Hardening Sand
Casting Method:	Thermal Gravity Casting
Sand Core Type:	Resin Sand Core
Application:	Oil and Gas
Machining :	CNC machining

ASTM A216	WCB,WCC...
ASTM A352	LCA,LCB,LCC,LC1,LC2,LC3,CA6NM...
ASTM A217	WC1,WC5,WC6,WC9,C5,C12,C12A,CA15...
ASTM A351	CF3,CF8,CF3M,CF8M,CF8C,CF10,CK20,CF10MC,CN7M,CN3MN,CG6MN,CG8M,CK3MCuN,CG3M...
ASTM A487	4A,4B,4C...
ASTM A494	M35-1,M35-2,N12MV,CW12MW,CW6MC..
ASTM A747	CB7Cu-1,Cu7Cu-2...
ASTM A890	CD4MCu,CD3MCuN...
ASTM A995	CD4MCuN,CE8MN,CD6MN,CD3MN,CE3MN,CD3MWCuN...
NICKEL	NICKEL 200, NICKEL 201...
NICKEL-COPPER	MONEL 400, MONEL 405, MONEL 500...
NICKEL-CHROME-ALLOY	INCONEL 600, INCONEL 601, INCONEL 625, INCONEL 718...
EN 10213	1.0619,1.4308,1.4408,1.4309,1.4409,1.7357,1.7379...

CHANGZHOU KADI INTERNATIONAL

Note: All mentioned names, Trademarks and Part No. are the property of their respective manufacturers, all consumables are not original, are manufactured and sold by KADI CO., reference to the original manufacturer is for convenience only.

Metallurgical equipment accessories/Drain hole2



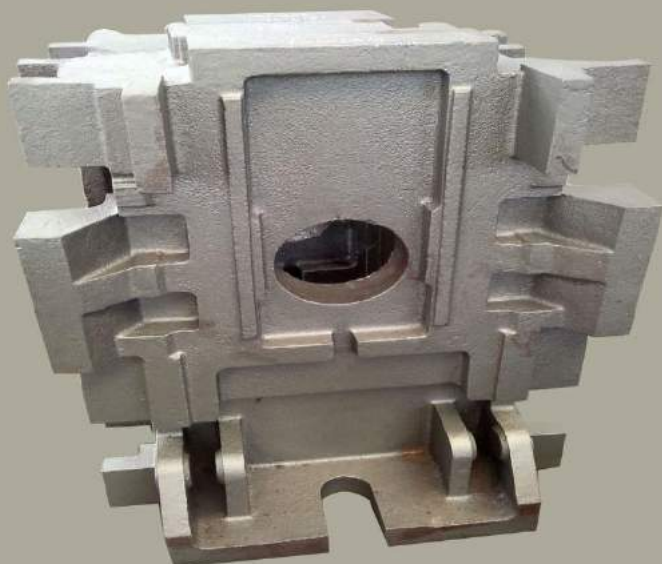
Product Details

Model No:	Drain hole 2 / Customized
Material:	Carbon steel/alloy steel/stainless steel
Type :	Chemical Hardening Sand
Casting Method:	Thermal Gravity Casting
Sand Core Type:	Resin Sand Core
Application:	Oil and Gas
Machining :	CNC machining

ASTM A216	WCB,WCC...
ASTM A352	LCA,LCB,LCC,LC1,LC2,LC3,CA6NM...
ASTM A217	WC1,WC5,WC6,WC9,C5,C12,C12A,CA15...
ASTM A351	CF3,CF8,CF3M,CF8M,CF8C,CF10,CK20,CF10MC,CN7M,CN3MN,CG6MN,CG8M,CK3MCuN,CG3M...
ASTM A487	4A,4B,4C...
ASTM A494	M35-1,M35-2,N12MV,CW12MW,CW6MC..
ASTM A747	CB7Cu-1,Cu7Cu-2...
ASTM A890	CD4MCu,CD3MCuN...
ASTM A995	CD4MCuN,CE8MN,CD6MN,CD3MN,CE3MN,CD3MWCuN...
NICKEL	NICKEL 200, NICKEL 201...
NICKEL-COPPER	MONEL 400, MONEL 405, MONEL 500...
NICKEL-CHROME-ALLOY	INCONEL 600, INCONEL 601, INCONEL 625, INCONEL 718...
EN 10213	1.0619,1.4308,1.4408,1.4309,1.4409,1.7357,1.7379...

Note: All mentioned names, Trademarks and Part No. are the property of their respective manufacturers, all consumables are not original, are manufactured and sold by KADI CO., reference to the original manufacturer is for convenience only.

Metallurgical equipment accessories/Fixed frame1



Product Details

Model No:	Fixed frame 1 / Customized
Material:	Carbon steel/alloy steel/stainless steel
Type :	Chemical Hardening Sand
Casting Method:	Thermal Gravity Casting
Sand Core Type:	Resin Sand Core
Application:	Oil and Gas
Machining :	CNC machining

ASTM A216	WCB,WCC...
ASTM A352	LCA,LCB,LCC,LC1,LC2,LC3,CA6NM...
ASTM A217	WC1,WC5,WC6,WC9,C5,C12,C12A,CA15...
ASTM A351	CF3,CF8,CF3M,CF8M,CF8C,CF10,CK20,CF10MC,CN7M,CN3MN,CG6MN,CG8M,CK3MCuN,CG3M...
ASTM A487	4A,4B,4C...
ASTM A494	M35-1,M35-2,N12MV,CW12MW,CW6MC..
ASTM A747	CB7Cu-1,Cu7Cu-2...
ASTM A890	CD4MCu,CD3MCuN...
ASTM A995	CD4MCuN,CE8MN,CD6MN,CD3MN,CE3MN,CD3MWCuN...
NICKEL	NICKEL 200, NICKEL 201...
NICKEL-COPPER	MONEL 400, MONEL 405, MONEL 500...
NICKEL-CHROME-ALLOY	INCONEL 600, INCONEL 601, INCONEL 625, INCONEL 718...
EN 10213	1.0619,1.4308,1.4408,1.4309,1.4409,1.7357,1.7379...

Note: All mentioned names, Trademarks and Part No. are the property of their respective manufacturers, all consumables are not original, are manufactured and sold by KADI CO., reference to the original manufacturer is for convenience only.

Metallurgical equipment accessories/Fixed frame2



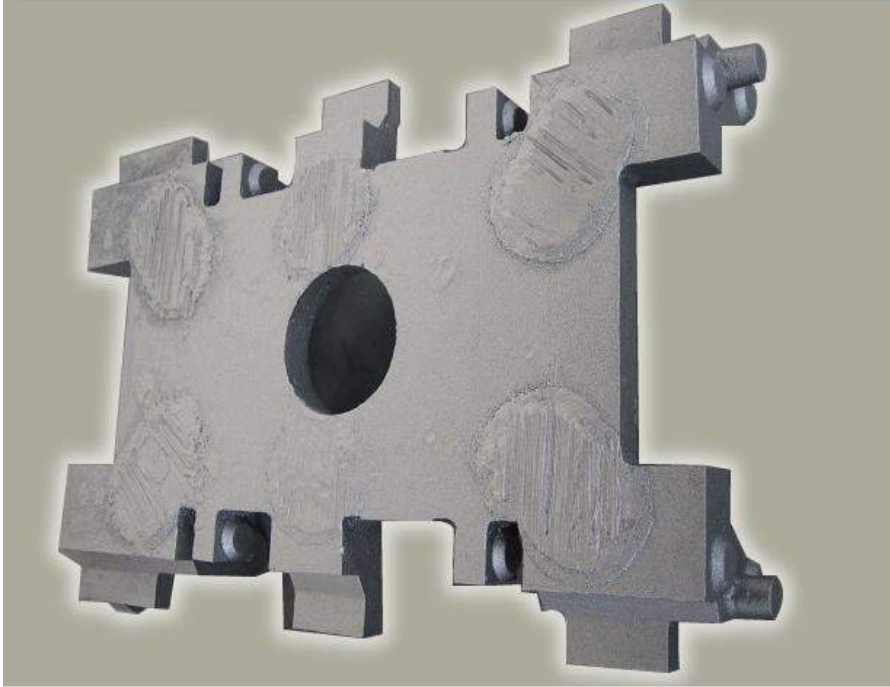
Product Details

Model No:	Fixed frame 2 / Customized
Material:	Carbon steel/alloy steel/stainless steel
Type :	Chemical Hardening Sand
Casting Method:	Thermal Gravity Casting
Sand Core Type:	Resin Sand Core
Application:	Oil and Gas
Machining :	CNC machining

ASTM A216	WCB,WCC...
ASTM A352	LCA,LCB,LCC,LC1,LC2,LC3,CA6NM...
ASTM A217	WC1,WC5,WC6,WC9,C5,C12,C12A,CA15...
ASTM A351	CF3,CF8,CF3M,CF8M,CF8C,CF10,CK20,CF10MC,CN7M,CN3MN,CG6MN,CG8M,CK3MCuN,CG3M...
ASTM A487	4A,4B,4C...
ASTM A494	M35-1,M35-2,N12MV,CW12MW,CW6MC..
ASTM A747	CB7Cu-1,Cu7Cu-2...
ASTM A890	CD4MCu,CD3MCuN...
ASTM A995	CD4MCuN,CE8MN,CD6MN,CD3MN,CE3MN,CD3MWCuN...
NICKEL	NICKEL 200, NICKEL 201...
NICKEL-COPPER	MONEL 400, MONEL 405, MONEL 500...
NICKEL-CHROME-ALLOY	INCONEL 600, INCONEL 601, INCONEL 625, INCONEL 718...
EN 10213	1.0619,1.4308,1.4408,1.4309,1.4409,1.7357,1.7379...

Note. All mentioned names, Trademarks and Part No. are the property of their respective manufacturers, all consumables are not original, are manufactured and sold by KADI CO., reference to the original manufacturer is for convenience only.

Metallurgical equipment accessories/Fixed frame3



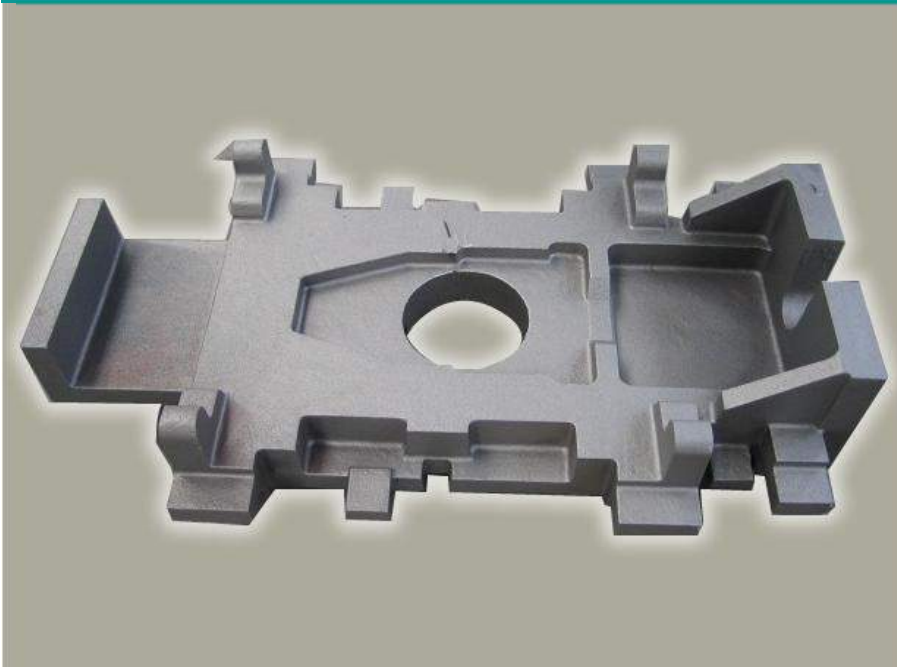
Product Details

Model No:	Fixed frame 3 / Customized
Material:	Carbon steel/alloy steel/stainless steel
Type :	Chemical Hardening Sand
Casting Method:	Thermal Gravity Casting
Sand Core Type:	Resin Sand Core
Application:	Oil and Gas
Machining :	CNC machining

ASTM A216	WCB,WCC...
ASTM A352	LCA,LCB,LCC,LC1,LC2,LC3,CA6NM...
ASTM A217	WC1,WC5,WC6,WC9,C5,C12,C12A,CA15...
ASTM A351	CF3,CF8,CF3M,CF8M,CF8C,CF10,CK20,CF10MC,CN7M,CN3MN,CG6MN,CG8M,CK3MCuN,CG3M...
ASTM A487	4A,4B,4C...
ASTM A494	M35-1,M35-2,N12MV,CW12MW,CW6MC..
ASTM A747	CB7Cu-1,Cu7Cu-2...
ASTM A890	CD4MCu,CD3MCuN...
ASTM A995	CD4MCuN,CE8MN,CD6MN,CD3MN,CE3MN,CD3MWCuN...
NICKEL	NICKEL 200, NICKEL 201...
NICKEL-COPPER	MONEL 400, MONEL 405, MONEL 500...
NICKEL-CHROME-ALLOY	INCONEL 600, INCONEL 601, INCONEL 625, INCONEL 718...
EN 10213	1.0619,1.4308,1.4408,1.4309,1.4409,1.7357,1.7379...

Note: All mentioned names, Trademarks and Part No. are the property of their respective manufacturers, all consumables are not original, are manufactured and sold by KADI CO., reference to the original manufacturer is for convenience only.

Metallurgical equipment accessories/Fixed frame4



Product Details

Model No:	Fixed frame 4 / Customized
Material:	Carbon steel/alloy steel/stainless steel
Type :	Chemical Hardening Sand
Casting Method:	Thermal Gravity Casting
Sand Core Type:	Resin Sand Core
Application:	Oil and Gas
Machining :	CNC machining

ASTM A216	WCB,WCC...
ASTM A352	LCA,LCB,LCC,LC1,LC2,LC3,CA6NM...
ASTM A217	WC1,WC5,WC6,WC9,C5,C12,C12A,CA15...
ASTM A351	CF3,CF8,CF3M,CF8M,CF8C,CF10,CK20,CF10MC,CN7M,CN3MN,CG6MN,CG8M,CK3MCuN,CG3M...
ASTM A487	4A,4B,4C...
ASTM A494	M35-1,M35-2,N12MV,CW12MW,CW6MC..
ASTM A747	CB7Cu-1,Cu7Cu-2...
ASTM A890	CD4MCu,CD3MCuN...
ASTM A995	CD4MCuN,CE8MN,CD6MN,CD3MN,CE3MN,CD3MWCuN...
NICKEL	NICKEL 200, NICKEL 201...
NICKEL-COPPER	MONEL 400, MONEL 405, MONEL 500...
NICKEL-CHROME-ALLOY	INCONEL 600, INCONEL 601, INCONEL 625, INCONEL 718...
EN 10213	1.0619,1.4308,1.4408,1.4309,1.4409,1.7357,1.7379...

Note: All mentioned names, Trademarks and Part No. are the property of their respective manufacturers, all consumables are not original, are manufactured and sold by KADI CO., reference to the original manufacturer is for convenience only.

Metallurgical equipment accessories/Sliding frame



Product Details

Model No:	Sliding frame / Customized
Material:	Carbon steel/alloy steel/stainless steel
Type :	Chemical Hardening Sand
Casting Method:	Thermal Gravity Casting
Sand Core Type:	Resin Sand Core
Application:	Oil and Gas
Machining :	CNC machining

ASTM A216	WCB,WCC...
ASTM A352	LCA,LCB,LCC,LC1,LC2,LC3,CA6NM...
ASTM A217	WC1,WC5,WC6,WC9,C5,C12,C12A,CA15...
ASTM A351	CF3,CF8,CF3M,CF8M,CF8C,CF10,CK20,CF10MC,CN7M,CN3MN,CG6MN,CG8M,CK3MCuN,CG3M...
ASTM A487	4A,4B,4C...
ASTM A494	M35-1,M35-2,N12MV,CW12MW,CW6MC..
ASTM A747	CB7Cu-1,Cu7Cu-2...
ASTM A890	CD4MCu,CD3MCuN...
ASTM A995	CD4MCuN,CE8MN,CD6MN,CD3MN,CE3MN,CD3MWCuN...
NICKEL	NICKEL 200, NICKEL 201...
NICKEL-COPPER	MONEL 400, MONEL 405, MONEL 500...
NICKEL-CHROME-ALLOY	INCONEL 600, INCONEL 601, INCONEL 625, INCONEL 718...
EN 10213	1.0619,1.4308,1.4408,1.4309,1.4409,1.7357,1.7379...

CHANGZHOU KADI INTERNATIONAL

Note: All mentioned names, Trademarks and Part No. are the property of their respective manufacturers, all consumables are not original, are manufactured and sold by KADI CO., reference to the original manufacturer is for convenience only.

Forestry machinery/Cutter1



Product Details

Model No:	Cutter 1 / Customized
Material:	Carbon steel/alloy steel/stainless steel
Type :	Chemical Hardening Sand
Casting Method:	Thermal Gravity Casting
Sand Core Type:	Resin Sand Core
Application:	Oil and Gas
Machining :	CNC machining

ASTM A216	WCB,WCC...
ASTM A352	LCA,LCB,LCC,LC1,LC2,LC3,CA6NM...
ASTM A217	WC1,WC5,WC6,WC9,C5,C12,C12A,CA15...
ASTM A351	CF3,CF8,CF3M,CF8M,CF8C,CF10,CK20,CF10MC,CN7M,CN3MN,CG6MN,CG8M,CK3MCuN,CG3M...
ASTM A487	4A,4B,4C...
ASTM A494	M35-1,M35-2,N12MV,CW12MW,CW6MC..
ASTM A747	CB7Cu-1,Cu7Cu-2...
ASTM A890	CD4MCu,CD3MCuN...
ASTM A995	CD4MCuN,CE8MN,CD6MN,CD3MN,CE3MN,CD3MWCuN...
NICKEL	NICKEL 200, NICKEL 201...
NICKEL-COPPER	MONEL 400, MONEL 405, MONEL 500...
NICKEL-CHROME-ALLOY	INCONEL 600, INCONEL 601, INCONEL 625, INCONEL 718...
EN 10213	1.0619,1.4308,1.4408,1.4309,1.4409,1.7357,1.7379...

CHANGZHOU KADI INTERNATIONAL

Note: All mentioned names, Trademarks and Part No. are the property of their respective manufacturers, all consumables are not original, are manufactured and sold by KADI CO., reference to the original manufacturer is for convenience only.

Forestry machinery/Cutter2



Product Details

Model No:	Cutter 2 / Customized
Material:	Carbon steel/alloy steel/stainless steel
Type :	Chemical Hardening Sand
Casting Method:	Thermal Gravity Casting
Sand Core Type:	Resin Sand Core
Application:	Oil and Gas
Machining :	CNC machining

ASTM A216	WCB,WCC...
ASTM A352	LCA,LCB,LCC,LC1,LC2,LC3,CA6NM...
ASTM A217	WC1,WC5,WC6,WC9,C5,C12,C12A,CA15...
ASTM A351	CF3,CF8,CF3M,CF8M,CF8C,CF10,CK20,CF10MC,CN7M,CN3MN,CG6MN,CG8M,CK3MCuN,CG3M...
ASTM A487	4A,4B,4C...
ASTM A494	M35-1,M35-2,N12MV,CW12MW,CW6MC..
ASTM A747	CB7Cu-1,Cu7Cu-2...
ASTM A890	CD4MCu,CD3MCuN...
ASTM A995	CD4MCuN,CE8MN,CD6MN,CD3MN,CE3MN,CD3MWCuN...
NICKEL	NICKEL 200, NICKEL 201...
NICKEL-COPPER	MONEL 400, MONEL 405, MONEL 500...
NICKEL-CHROME-ALLOY	INCONEL 600, INCONEL 601, INCONEL 625, INCONEL 718...
EN 10213	1.0619,1.4308,1.4408,1.4309,1.4409,1.7357,1.7379...

Note: All mentioned names, Trademarks and Part No. are the property of their respective manufacturers, all consumables are not original, are manufactured and sold by KADI CO., reference to the original manufacturer is for convenience only.

Forestry machinery/Semicircular tube inner sleeve



Product Details

Model No:	Semicircular tube inner sleeve / Customized
Material:	Carbon steel/alloy steel/stainless steel
Type :	Chemical Hardening Sand
Casting Method:	Thermal Gravity Casting
Sand Core Type:	Resin Sand Core
Application:	Oil and Gas
Machining :	CNC machining

ASTM A216	WCB,WCC...
ASTM A352	LCA,LCB,LCC,LC1,LC2,LC3,CA6NM...
ASTM A217	WC1,WC5,WC6,WC9,C5,C12,C12A,CA15...
ASTM A351	CF3,CF8,CF3M,CF8M,CF8C,CF10,CK20,CF10MC,CN7M,CN3MN,CG6MN,CG8M,CK3MCuN,CG3M...
ASTM A487	4A,4B,4C...
ASTM A494	M35-1,M35-2,N12MV,CW12MW,CW6MC..
ASTM A747	CB7Cu-1,Cu7Cu-2...
ASTM A890	CD4MCu,CD3MCuN...
ASTM A995	CD4MCuN,CE8MN,CD6MN,CD3MN,CE3MN,CD3MWCuN...
NICKEL	NICKEL 200, NICKEL 201...
NICKEL-COPPER	MONEL 400, MONEL 405, MONEL 500...
NICKEL-CHROME-ALLOY	INCONEL 600, INCONEL 601, INCONEL 625, INCONEL 718...
EN 10213	1.0619,1.4308,1.4408,1.4309,1.4409,1.7357,1.7379...

CHANGZHOU KADI INTERNATIONAL

Note: All mentioned names, Trademarks and Part No. are the property of their respective manufacturers, all consumables are not original, are manufactured and sold by KADI CO., reference to the original manufacturer is for convenience only.

Forestry machinery/Briar dress wheel



Product Details

Model No:	Briar dress wheel / Customized
Material:	Carbon steel/alloy steel/stainless steel
Type :	Chemical Hardening Sand
Casting Method:	Thermal Gravity Casting
Sand Core Type:	Resin Sand Core
Application:	Oil and Gas
Machining :	CNC machining

ASTM A216	WCB,WCC...
ASTM A352	LCA,LCB,LCC,LC1,LC2,LC3,CA6NM...
ASTM A217	WC1,WC5,WC6,WC9,C5,C12,C12A,CA15...
ASTM A351	CF3,CF8,CF3M,CF8M,CF8C,CF10,CK20,CF10MC,CN7M,CN3MN,CG6MN,CG8M,CK3MCuN,CG3M...
ASTM A487	4A,4B,4C...
ASTM A494	M35-1,M35-2,N12MV,CW12MW,CW6MC..
ASTM A747	CB7Cu-1,Cu7Cu-2...
ASTM A890	CD4MCu,CD3MCuN...
ASTM A995	CD4MCuN,CE8MN,CD6MN,CD3MN,CE3MN,CD3MWCuN...
NICKEL	NICKEL 200, NICKEL 201...
NICKEL-COPPER	MONEL 400, MONEL 405, MONEL 500...
NICKEL-CHROME-ALLOY	INCONEL 600, INCONEL 601, INCONEL 625, INCONEL 718...
EN 10213	1.0619,1.4308,1.4408,1.4309,1.4409,1.7357,1.7379...

CHANGZHOU KADI INTERNATIONAL

Note: All mentioned names, Trademarks and Part No. are the property of their respective manufacturers, all consumables are not original, are manufactured and sold by KADI CO., reference to the original manufacturer is for convenience only.

Forestry machinery/Bushing



Product Details

Model No:	Bushing / Customized
Material:	Carbon steel/alloy steel/stainless steel
Type :	Chemical Hardening Sand
Casting Method:	Thermal Gravity Casting
Sand Core Type:	Resin Sand Core
Application:	Oil and Gas
Machining :	CNC machining

ASTM A216	WCB,WCC...
ASTM A352	LCA,LCB,LCC,LC1,LC2,LC3,CA6NM...
ASTM A217	WC1,WC5,WC6,WC9,C5,C12,C12A,CA15...
ASTM A351	CF3,CF8,CF3M,CF8M,CF8C,CF10,CK20,CF10MC,CN7M,CN3MN,CG6MN,CG8M,CK3MCuN,CG3M...
ASTM A487	4A,4B,4C...
ASTM A494	M35-1,M35-2,N12MV,CW12MW,CW6MC..
ASTM A747	CB7Cu-1,Cu7Cu-2...
ASTM A890	CD4MCu,CD3MCuN...
ASTM A995	CD4MCuN,CE8MN,CD6MN,CD3MN,CE3MN,CD3MWCuN...
NICKEL	NICKEL 200, NICKEL 201...
NICKEL-COPPER	MONEL 400, MONEL 405, MONEL 500...
NICKEL-CHROME-ALLOY	INCONEL 600, INCONEL 601, INCONEL 625, INCONEL 718...
EN 10213	1.0619,1.4308,1.4408,1.4309,1.4409,1.7357,1.7379...

CHANGZHOU KADI INTERNATIONAL

Note: All mentioned names, Trademarks and Part No. are the property of their respective manufacturers, all consumables are not original, are manufactured and sold by KADI CO., reference to the original manufacturer is for convenience only.

Forestry machinery/Screw shaft head



Product Details

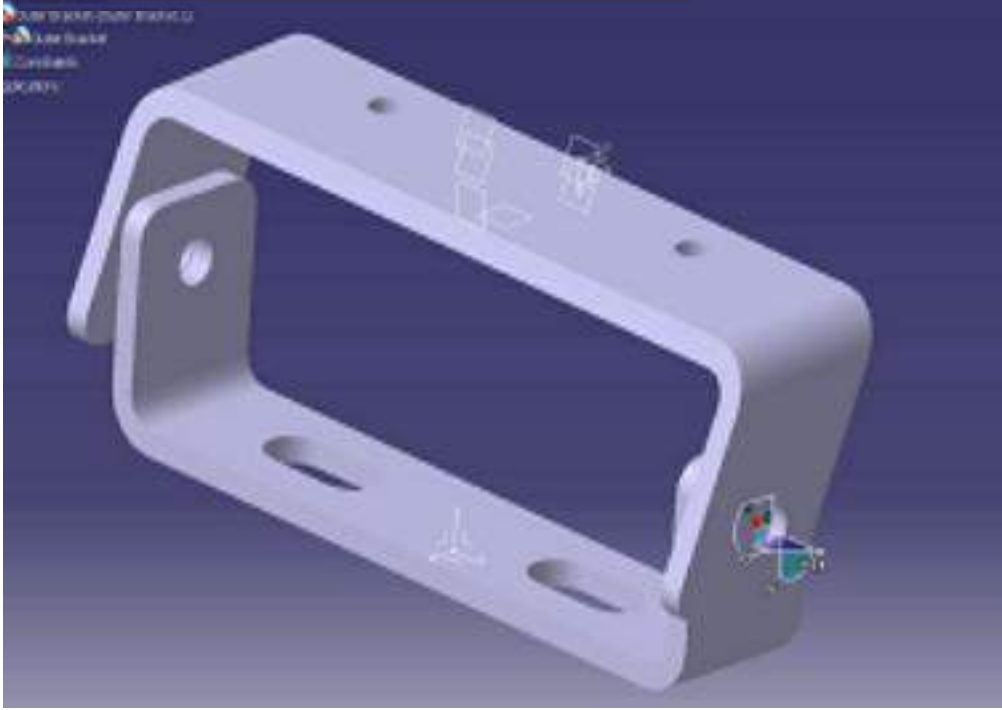
Model No:	Screw shaft head / Customized
Material:	Carbon steel/alloy steel/stainless steel
Type :	Chemical Hardening Sand
Casting Method:	Thermal Gravity Casting
Sand Core Type:	Resin Sand Core
Application:	Oil and Gas
Machining :	CNC machining

ASTM A216	WCB,WCC...
ASTM A352	LCA,LCB,LCC,LC1,LC2,LC3,CA6NM...
ASTM A217	WC1,WC5,WC6,WC9,C5,C12,C12A,CA15...
ASTM A351	CF3,CF8,CF3M,CF8M,CF8C,CF10,CK20,CF10MC,CN7M,CN3MN,CG6MN,CG8M,CK3MCuN,CG3M...
ASTM A487	4A,4B,4C...
ASTM A494	M35-1,M35-2,N12MV,CW12MW,CW6MC..
ASTM A747	CB7Cu-1,Cu7Cu-2...
ASTM A890	CD4MCu,CD3MCuN...
ASTM A995	CD4MCuN,CE8MN,CD6MN,CD3MN,CE3MN,CD3MWCuN...
NICKEL	NICKEL 200, NICKEL 201...
NICKEL-COPPER	MONEL 400, MONEL 405, MONEL 500...
NICKEL-CHROME-ALLOY	INCONEL 600, INCONEL 601, INCONEL 625, INCONEL 718...
EN 10213	1.0619,1.4308,1.4408,1.4309,1.4409,1.7357,1.7379...

CHANGZHOU KADI INTERNATIONAL

Note: All mentioned names, Trademarks and Part No. are the property of their respective manufacturers, all consumables are not original, are manufactured and sold by KADI CO., reference to the original manufacturer is for convenience only.

Stain steel casting parts



Product Details

Model No:	Stain steel casting parts / Customized
Material:	stainless steel
Casting Method:	Colloidal silica casting
Mould Type:	Aluminium mold
Application:	Oil and Gas
Machining :	CNC machining

CHANGZHOU KADI INTERNATIONAL

Note: All mentioned names, Trademarks and Part No. are the property of their respective manufacturers, all consumables are not original, are manufactured and sold by KADI CO., reference to the original manufacturer is for convenience only.